



# CREST BY WESTGATE

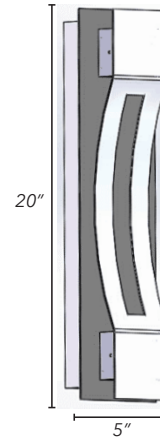
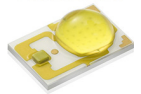


## TECHNICAL SPECIFICATIONS:

- ❑ Crest Series by Westgate
- ❑ Patent-Pending design with separate light engine (base) and interchangeable designer trims expand the series to multiple color temperatures and models.
- ❑ Series can be stocked as separate engines and trims to offer a versatile collection at the store level.
- ❑ Die-cast Aluminum weatherproof housing, steel backplate, Aluminum Trim (Dark Bronze or Silver)
- ❑ LED: Philips Lumileds LEDs
- ❑ Wattage: 10W (2.5W X 4)
- ❑ Total Lumens: 900LM
- ❑ Color Temperatures: 3000K & 4000K & 5000K
- ❑ Voltage: 100~277V AC, 50/60Hz
- ❑ CRI: >70
- ❑ Power Factor: 95%
- ❑ Operating temp: -40°F to 104°F
- ❑ 50,000 hour rated life
- ❑ 7-year warranty
- ❑ IP65, Suitable for Wet Locations



PHILIPS LUMILEDS



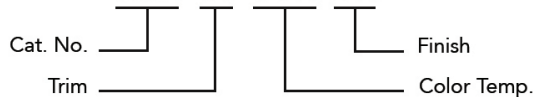
- Depths:
- 01 5.5"
  - 02 3.3"
  - 03 4.0"
  - 04 3.3"
  - 05 4.3"
  - 06 3.3"
  - 07 3.9"
  - 08 4.5"

## CREST BY WESTGATE LED WALL SCONCES

CATALOG NO.	TRIM		COLOR TEMPERATURE		FINISH	
	CODE	DESCRIPTION	CODE	DESCRIPTION	CODE	DESCRIPTION
CRE	01	Lunette	30K	3000K	BR	Bronze
	02	Aperture	40K	4000K	SIL	Silver
	03	Grasp	50K	5000K		
	04	Curve				
	05	Pen				
	06	Still				

Sample Order:

**CRE-03-30K-BR**

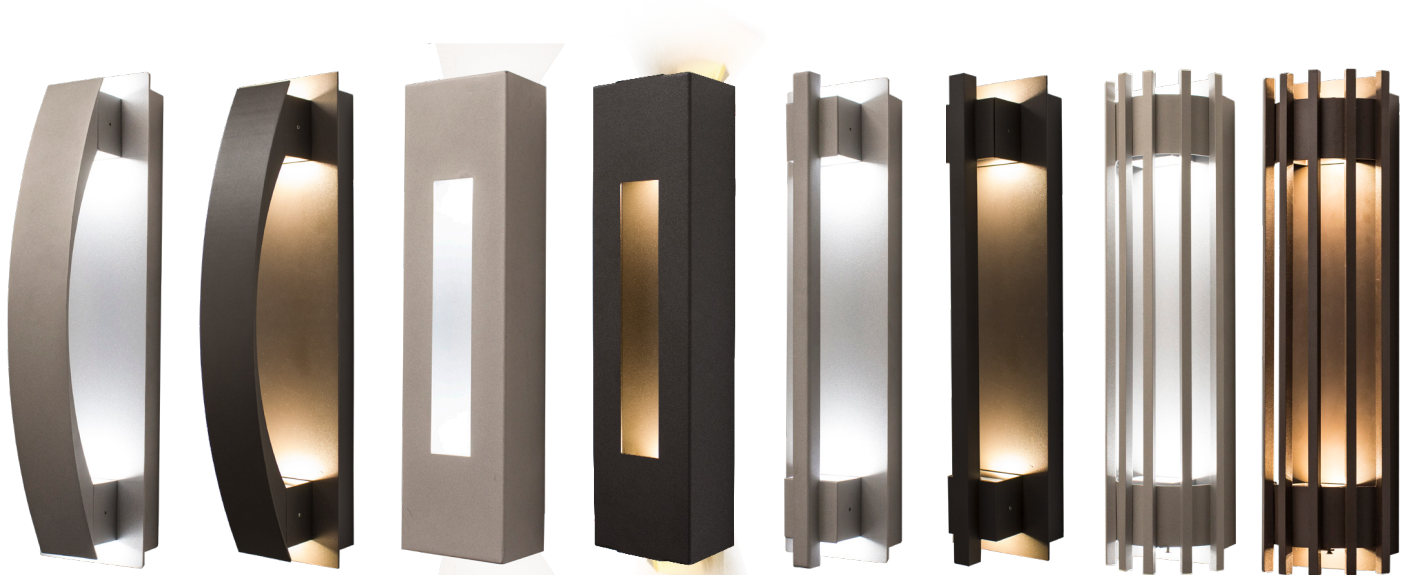


A57

LED WALL SCONCES



# CREST BY WESTGATE



**01**  
Lunette

**02**  
Aperture

**03**  
Grasp

**05**  
Pen



**04**  
Curve

**06**  
Still



**07**  
Passage

A58

LED WALL SCONCES